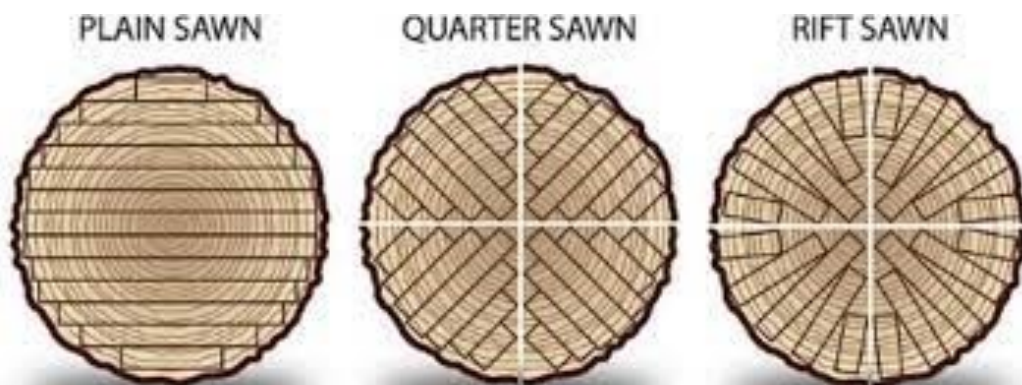


APPALACHIAN QUARTER & RIFT SAWN KD WHITE OAK



July 2021

Arriving
soon!



Thickness: 1", 1.25", 1.5" & 2" only

Lengths: 7 – 12'

(1) PLAIN SAWN / FLAT SAWN

Most common, least expensive

Plain sawn, also commonly called flat sawn, is the most common lumber you will find. This is the most inexpensive way to manufacture logs into lumber. Plain sawn lumber is the most common type of cut. The annular rings are generally 30 degrees or less to the face of the board; this is often referred to as tangential grain. The resulting wood displays a cathedral pattern on the face of the board.

(2) QUARTER SAWN

More expensive than plain sawn material

Quarter sawn wood has an amazing straight grain pattern that lends itself to design. Quarter sawn lumber is defined as wood where the annular growth rings intersect the face of the board at a 60 to 90 degree angle. When cutting this lumber at the sawmill, each log is sawed at a radial angle into four quarters, hence the name. Dramatic flecking is also present in red oak and white oak.

(3) RIFT SAWN

Most expensive, least common

Rift sawn wood can be manufactured either as a compliment to quarter sawn lumber or logs can be cut specifically as rift sawn. In rift sawn lumber the annual rings are typically between 30-60 degrees, with 45 degrees being optimum. Manufactured by milling perpendicular to the log's growth rings producing a linear grain pattern with no flecking. This method produces the most waste, increasing the cost of this lumber. Rift sawn lumber is very dimensionally stable and has a unique linear appearance.

Contact your local Sales Centre:

Trafford Park

T: 0844 728 0340

Parkend

T: 0844 728 0360

Grangemouth

T: 0844 728 0320

Purfleet

T: 0844 728 0390