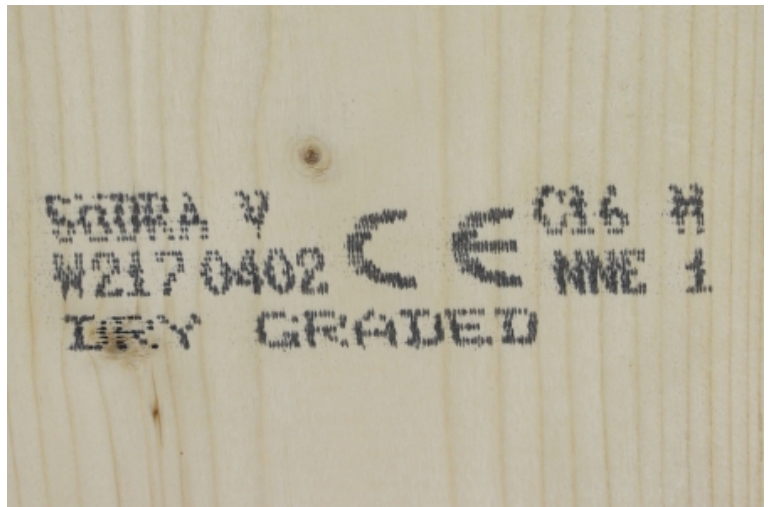


Structural Carcassing

BOTANICAL NAME

Spruce (Picea abies), Pine (Pinus sylvestris)



OVERVIEW

Structural Carcassing – Even Lengths 2.4 to 5.4

Further Product Information

APPLICATIONS & USES

Bespoke Roofing, Floor Joists

DIMENSIONS

Planed R4C – Untreated Larger sizes odd and longer lengths available on request

- 75 x 225 (72 x 220)
- 75 x 200 (72 x 195)
- 75 x 150 (72 x 145)
- 47 x 225 (45 x 220)
- 47 x 200 (45 x 195)
- 47 x 175 (45 x 170)
- 47 x 150 (45 x 145)
- 47 x 125 (45 x 120)
- 47 x 100 (45 x 98)
- 47 x 75 (45 x 70)
- 47 x 50 (45 x 45) â€œ (UNGRADED)
- 75 x 225 (72 x 220)
- 75 x 200 (72 x 195)

- 75 x 150 (72 x 145)
- 47 x 200 (45 x 195)
- 47 x 175 (45 x 170)
- 47 x 150 (45 x 145)
- 47 x 125 (45 x 120)
- 47 x 100 (45 x 98)
- 47 x 75 (45 x 70)
- 47 x 50 (45 x 45) â€“ (UNGRADED)

Planed R4C – Preservative Treated

- 47 x 50 (45 x 45) â€“ (UNGRADED)
- 47 x 75 (45 x 70)
- 47 x 100 (45 x 98)
- 47 x 125 (45 x 120)
- 47 x 150 (45 x 145)
- 47 x 175 (45 x 170)
- 47 x 200 (45 x 195)
- 47 x 225 (45 x 220)
- 75 x 150 (72 x 145)
- 75 x 200 (72 x 195)
- 75 x 225 (72 x 220)
- 47 x 50 (45 x 45) â€“ (UNGRADED)
- 47 x 75 (45 x 70)
- 47 x 100 (45 x 98)
- 47 x 125 (45 x 120)
- 47 x 150 (45 x 145)
- 47 x 175 (45 x 170)
- 47 x 200 (45 x 195)
- 47 x 225 (45 x 220)
- 75 x 150 (72 x 145)
- 75 x 200 (72 x 195)
- 75 x 225 (72 x 220)

ENVIRONMENTAL CREDENTIALS

Certification

FSC
PEFC

Origin

Sweden, Baltic States, Central Europe

TECHNICAL INFORMATION

Physical Structure

Strength Class C16/C24 – BS 4978 & EN14081:2006

Durability

4 (EN 350-2)

Storage Advice

Open yard on level platform with 'Plastic Hood' for protection

Purchasing Cycle

Monthly for eight weeks forward